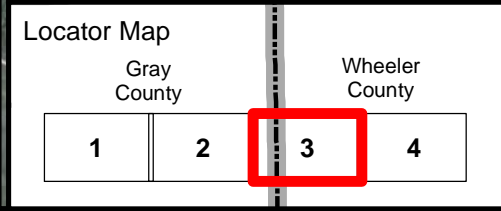
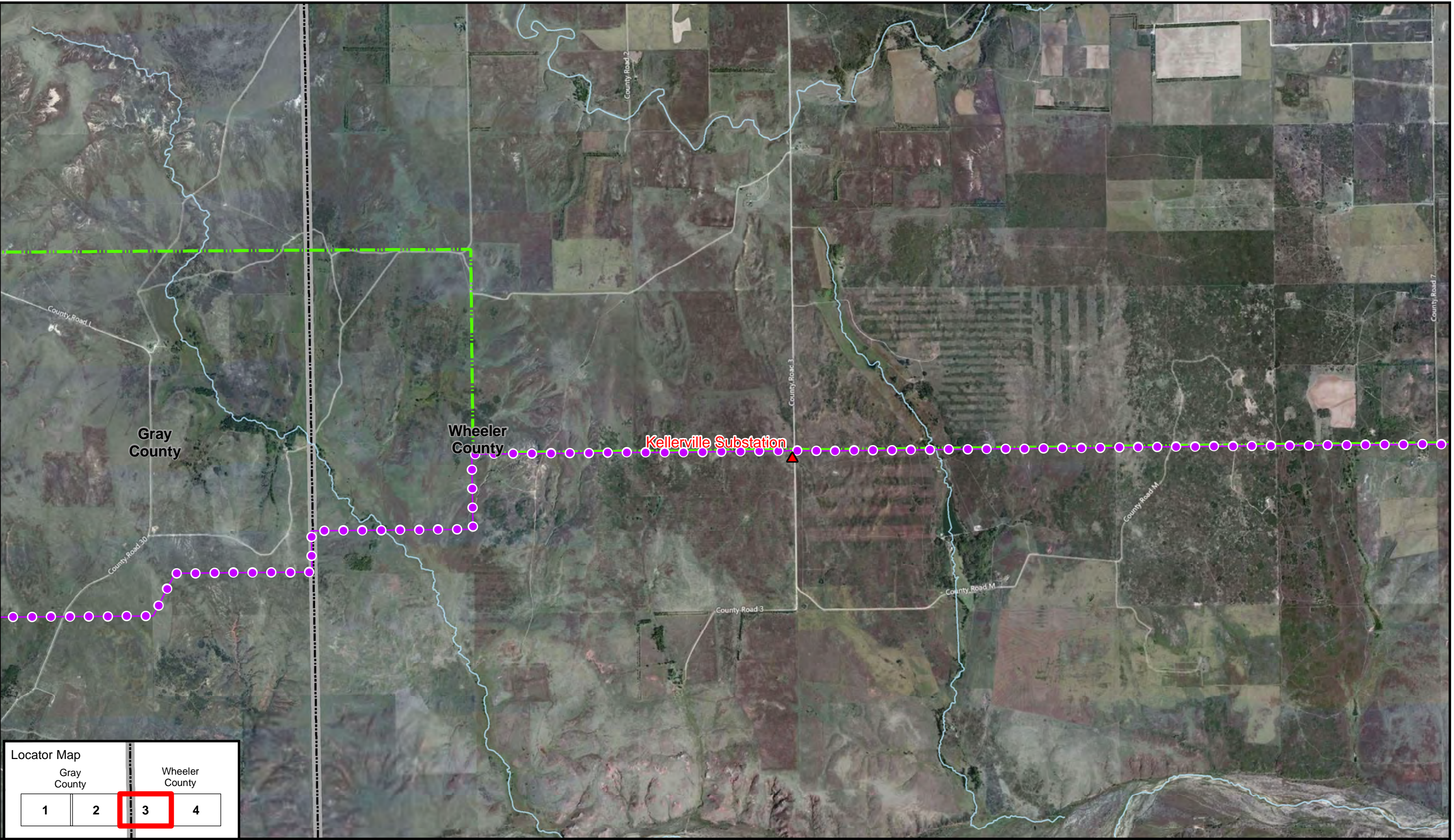


Path: V:\SPS62799_Bowers_Howard\GISDataFiles\ArcDocs\Approved_Route_WebMap.mxd k_wise 6/21/2013
COPYRIGHT © 2013 BURNS & MCDONNELL ENGINEERING COMPANY, INC.



▲ Existing Substation

●- - - - - Approved Route

▭ County Boundary

--- Existing SPS Transmission Line

- - - - - Cross Texas Transmission Proposed Transmission Line

- - - - - Existing & Proposed Greenbelt Transmission Line

3,000 1,500 0 3,000

Scale in Feet

NORTH

RESPONSIBLE BY NATURE®

Approved Route
Bowers to Howard
Sheet 3 of 4
Revised: June 9, 2013